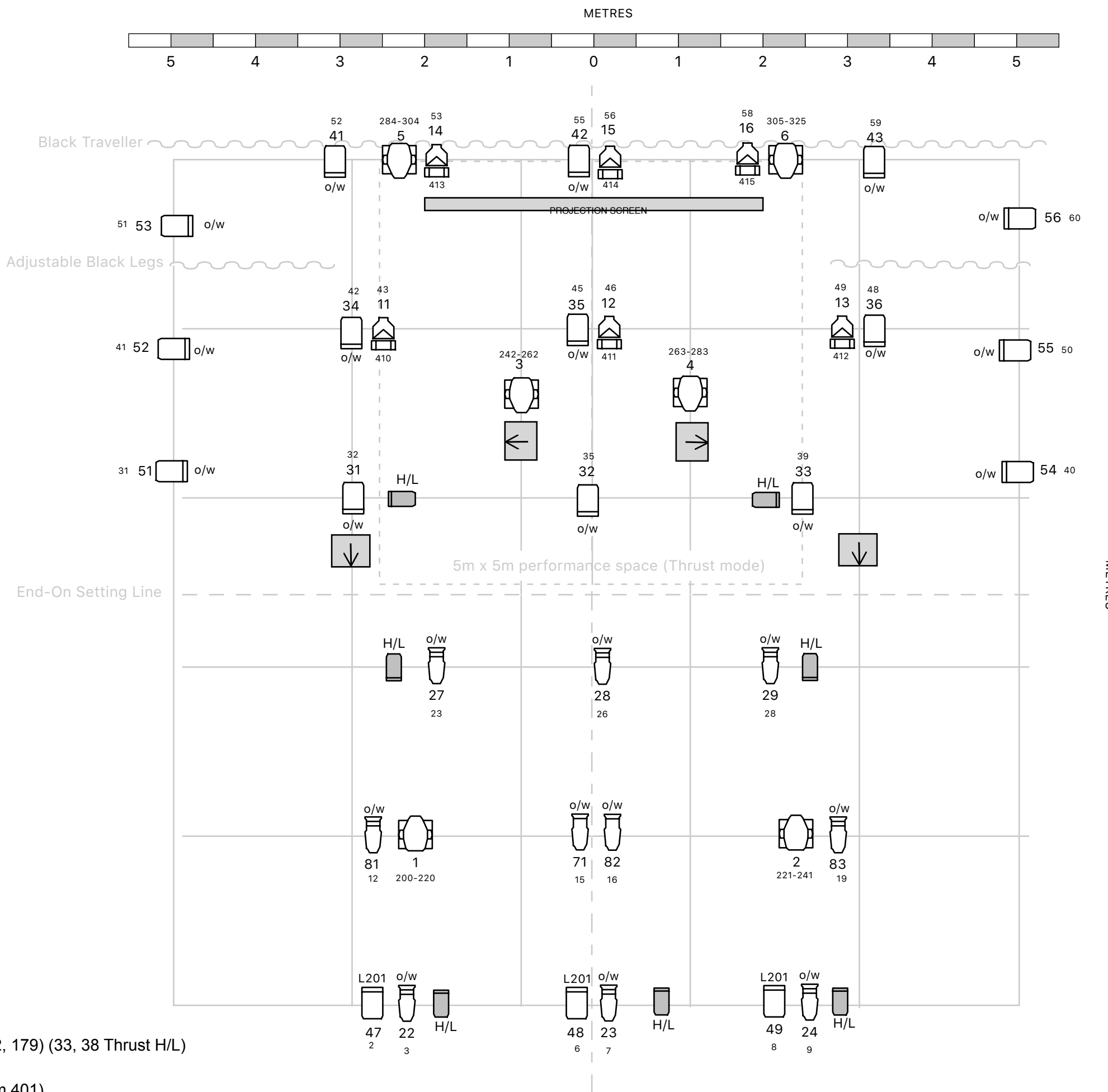


- Scroller Colours in Rosco Supergel:
- 1-13 Straw Tint
  - 2-371 Theatre Booster #1
  - 3-382 Congo Blue
  - 4-80 Primary Blue
  - 5-83 Medium Blue
  - 6-89 Moss Green
  - 7-90 Dark Yellow Green
  - 8-95 Medium Blue Green
  - 9-59 Indigo
  - 10-45 Rose
  - 11-49 Medium Purple
  - 12-27 Medium Red
  - 13-26 Light Red
  - 14-23 Orange
  - 15-312 Canary
  - 16-00 Clear

- Groups:
- 1 - Warm Wash FOH 21-30
  - 2 - Warm Wash B/L 41-43
  - 3 - Top Light 31-36
  - 4 - Cool Wash FOH 47-49
  - 5 - Scroller B/L 11-16
  - 6 - SL Pipe Ends 54-56
  - 7 - SR Pipe Ends 51-53

- Booms/Loose fixtures:
- 2 x 2.6m stands c/w T bars
  - 6 x 2m booms c/w floor bases
  - 12 x boom arms
  - 6 x ETC S4 Zoom 25/50
  - 6 x ETC S4 PAR WFL
  - 5 x Acclaim 650w Fresnels
  - 6 x Selecon HUI 500w floods

Houselights: Ch 101 (dims 171, 172, 179) (33, 38 Thrust H/L)  
 Control Area :Ch 99 (dim 70)  
 Projector DMX Dowser: Ch 100 (dim 401)  
 Scroller Power: Ch 300  
 Haze Machine DMX: Ch 200 (Address 190)  
 DMX switchable independent available on each overhead lighting bar.  
 Floor level dim circuits, DMX independents and tech power (up to 32A 1P) available  
 USL, USR



**KEY:**

- ETC S4 Par WFL
- ETC S4 Zoom 25-50
- ETC S4 Zoom 15-30
- Acclaim 650w Fresnel
- Rama 1kw Fresnel
- Robe 300 LED Wash
- Scroller
- Speaker (not moveable)

Colour  
  
 Desk Channel #  
 Dimmer/DMX #

**Notes:**

Drawing not to scale - representative only.

Units 81-83 available for refocus (size B gobo holders also available for these units).

Very limited colour filter kept in house - please supply what you require.

This drawing available as LXFree file on request.

Questions? Contact:  
 rachel.luff@oldfirestation.org.uk



STANDARD LIGHTING RIG