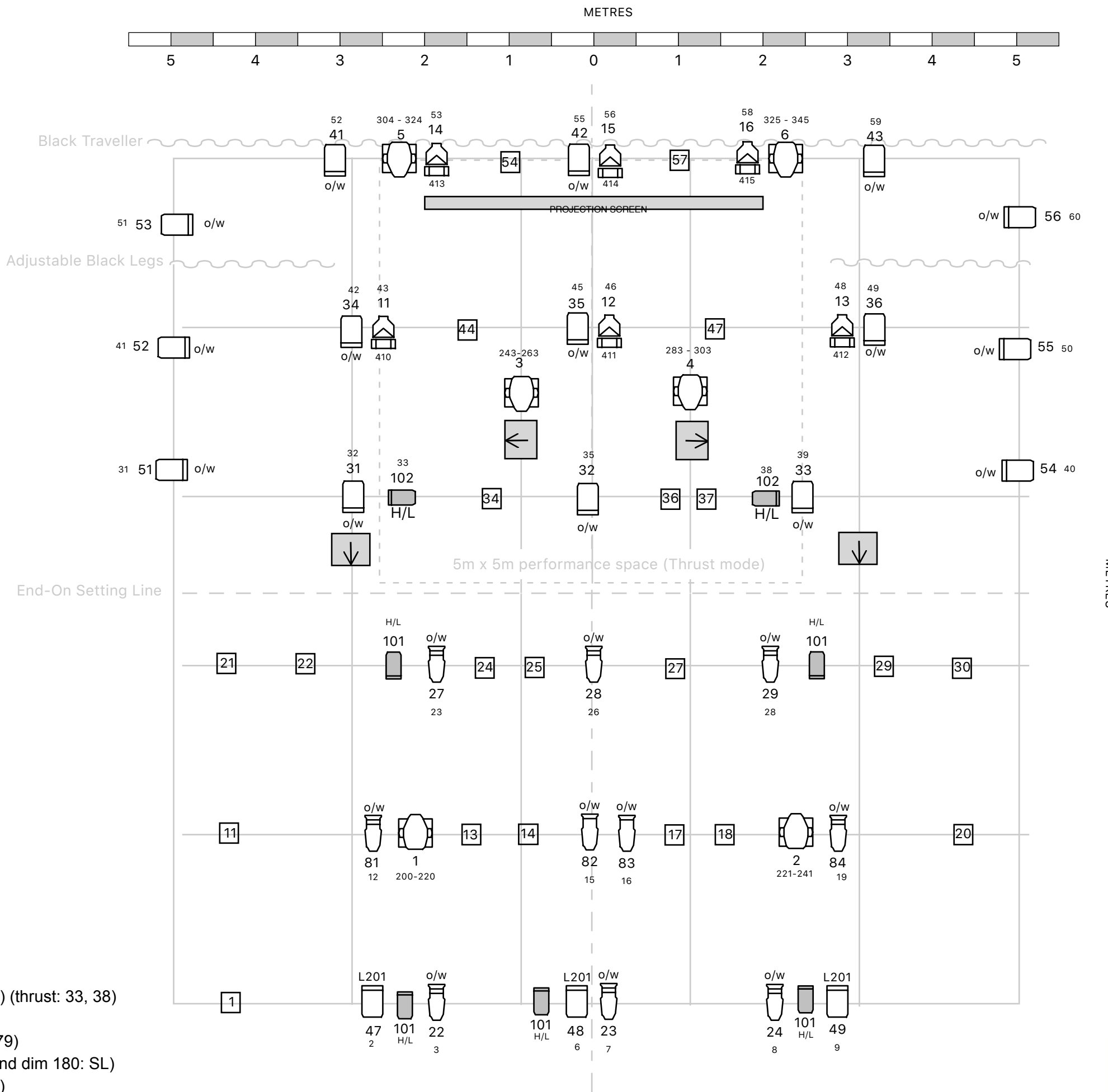


- Scroller Colours in Rosco Supergel:
- 1-13 Straw Tint
 - 2-371 Theatre Booster #1
 - 3-382 Congo Blue
 - 4-80 Primary Blue
 - 5-83 Medium Blue
 - 6-89 Moss Green
 - 7-90 Dark Yellow Green
 - 8-95 Medium Blue Green
 - 9-59 Indigo
 - 10-45 Rose
 - 11-49 Medium Purple
 - 12-27 Medium Red
 - 13-26 Light Red
 - 14-23 Orange
 - 15-312 Canary
 - 16-00 Clear

- Groups:
- 1 - Warm Wash FOH 21-30
 - 2 - Warm Wash B/L 41-43
 - 3 - Top Light 31-36
 - 4 - Cool Wash FOH 47-49
 - 5 - Scroller B/L 11-16
 - 6 - SL Pipe Ends 54-56
 - 7 - SR Pipe Ends 51-53

- Booms/Loose fixtures:
- 2 x 2.6m stands c/w T bars
 - 6 x 2m booms c/w floor bases
 - 12 x boom arms
 - 6 x ETC S4 Zoom 25/50
 - 6 x ETC S4 PAR WFL
 - 5 x Acclaim 650w Fresnels
 - 6 x Selecon HUI 500w floods

- Houselights: Ch 101 (dims 171, 172, 179) (thrust: 33, 38)
 Control Area :Ch 99 (dim 70)
 Upper Balcony Tech Area: Ch102 (dim 179)
 Under Balconies: Ch 600 (dim 176: SR and dim 180: SL)
 Projector DMX Dowser: Ch 100 (dim 401)
 Scroller and Mover Power: parked ch300 (dims 109, 111, 103, 104, 110, 112)
 DMX switchable independent available on each overhead lighting bar.
 Floor level dim circuits, DMX independents and tech power (up to 32A 1P) available
 USL, USR



KEY:

- ETC S4 Par WFL
- ETC S4 Zoom 25-50
- ETC S4 Zoom 15-30
- Acclaim 650w Fresnel
- Rama 1kw Fresnel
- Robe 300 LED Wash
- Scroller
- Speaker (not moveable)
- No. Free Socket - subject to change

Colour

 Desk Channel #
 Dimmer/DMX #

Notes:

Drawing not to scale - representative only.

Units 81-84 available for refocus (size B gobo holders also available for these units).

Very limited colour filter kept in house - please supply what you require.

This drawing available as LXFree file on request.

Questions? Contact:
 rachel.luff@oldfirestation.org.uk